



KONE MonoSpace® DX - Heavy Duty

Stadium Logistics

Facilitates the flow of goods between storage areas, kitchens, and other operational areas.

Event Setup and Tear-down

Streamlining the transportation of stage equipment, lighting rigs, seating, and other event materials.

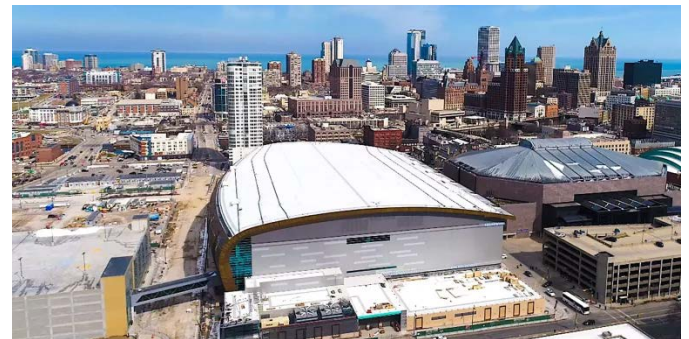
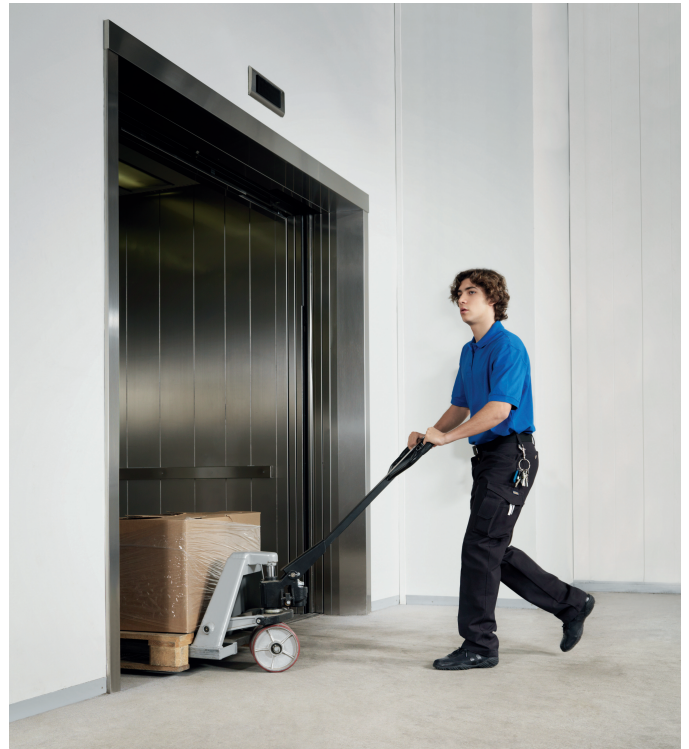
Accessibility for Maintenance

Easy access for maintenance to transport necessary materials to different areas of the stadium.

Stadium Efficiency Champions

In the dynamic and fast-paced environment of stadiums, efficient logistics and operations are paramount to smooth and successful events. Whether moving supplies to concession stands, transporting stage equipment, or coordinating the transport of Zamboni's, these freight elevators streamline processes, helping each event unfold seamlessly and on schedule.

KONE's elevator systems are engineered to meet the demands of any loading requirements, providing smooth, efficient, and reliable operations in stadiums. They play a key role in optimizing timelines and maintaining the venue's reputation for professionalism and capability.



KONE MonoSpace® DX Heavy Duty 100 – 150 FPM

Capacity (lbs.)	Platform	Door Location	Clear inside with single section gate	Minimum hoistway size-non-seismic	Minimum hoistway size-seismic
6000	8'-4" X 10'-0"	Front	8'-0" X 9'-7"	12'-0" X 10'-10"	12'-0" X 10'-10"
6000	8'-4" X 10'-0"	Front and Rear	8'-0" X 9'-6"	12'-0" X 10'-10"	12'-0" X 10'-10"
8000	8'-4" X 11'-0"	Front	8'-0" X 10'-7"	12'-0" X 11'-10"	12'-0" X 11'-10"
8000	8'-4" X 11'-0"	Front and Rear	8'-0" X 10'-6"	12'-0" X 11'-10"	12'-0" X 11'-10"
10,000	8'-4" X 12'-0"	Front	8'-0" X 11'-7"	12'-0" X 12'-10"	12'-0" X 12'-10"
10,000	8'-4" X 12'-0"	Front and Rear	8'-0" X 11'-6"	12'-0" X 12'-10"	12'-0" X 12'-10"